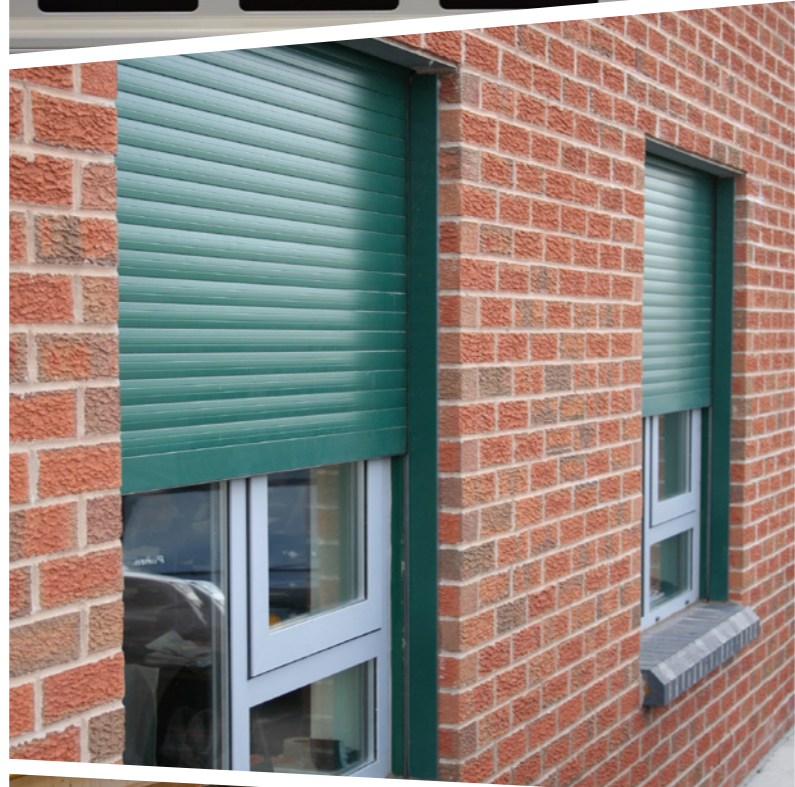
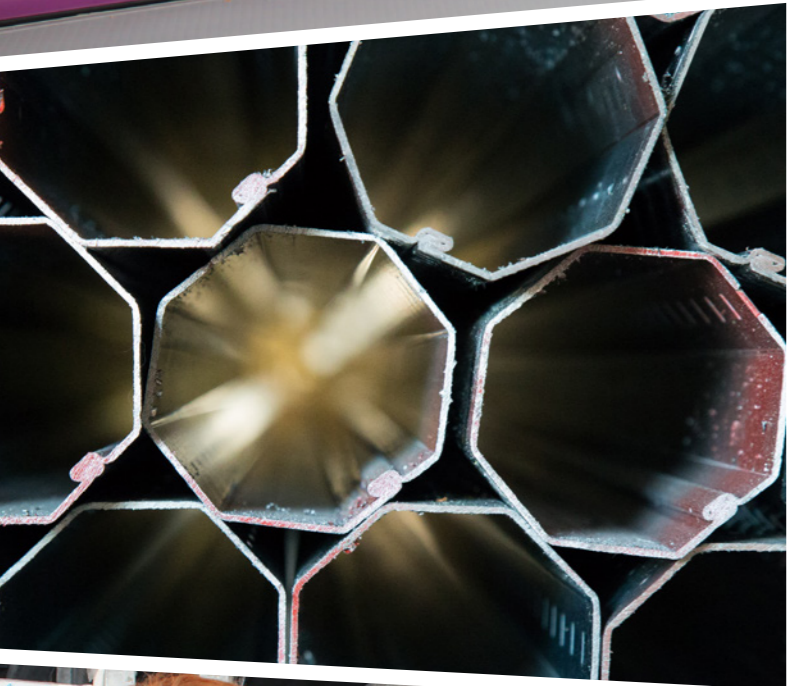




**Security
& Fire Protection**



About Aluroll

Established in 2004, Aluroll has grown exponentially to become the UK's largest independent manufacturer of roller garage doors and security shutters to the B2B market. This growth is a testament to the commitment of our employees to customers and their continued sense of teamwork.

Aluroll operates from a 40,000 square foot factory situated in Oswestry, Shropshire, with dedicated garage door, aluminium and steel production areas. In 2021, further investment was made in a state-of-the-art powder coating plant, enabling us to take our service and lead times to another level.

Aluroll works with internationally renowned raw material and component suppliers such as Hydro, Aluprof, Alukon and Tata Steel. Our control systems are sourced from Somfy, Teleco, Ellard and GFA. As a member of the Door and Hardware Federation, the company has demonstrated technical excellence, legal compliance and safety in all its operations.

Aluroll is assessed and certified by a number of leading independent bodies. The company meets ISO 9001:2015 quality management standard (to BS EN 13241-1:2003) and all products are UKCA and CE Marked.

Regular external audits by BRE Global allow our security-rated Elite product range to meet Loss Prevention Certification Board (LPCB) requirements for SR1 to SR5, according to LPS1175. The Classic roller garage door is also Secured by Design (SBD), a Police Preferred Specification for designing out crime. Flameroll Fire Shutters and Curtains have been tested and approved for 1 to 4 hour fire protection achieving E240 / EW20 ratings to BS EN 16034-1:2014 for fire resistance.





World-Class Service

State-Of-The-Art Production

Aluroll's growth has allowed the company to make significant reinvestments in production. Factory layouts, machinery and processes are continuously being optimised at the 40,000 square foot facility, with recent additions including an ACRA machine, powder coating plant, and a completely bespoke manufacturing and stock management system. This has translated into market-leading turnaround times, the flexibility to scale to accommodate large contracts, and quality customers can depend on.

Unrivalled Customer Support

The Aluroll team are renowned for offering the best knowledge and experience in the industry. Expect service which goes the extra mile, whether that's through fast responsiveness when quoting, flexibility with scheduling to squeeze in an urgent rush job, or a direct line to technical managers if a query arises on site. For new installers, or those branching into a new product, an assisted fit may help. All products are warranty protected for peace-of-mind and Aluroll's fleet of delivery vehicles handle nationwide deliveries, ensuring we have complete control of your order, every step of the way.

First for Innovation

Considerable investments in New Product Development have allowed us to expand our product range to meet a growing range of requirements and ensured certifications meet the latest fire and security legislation. From its roots in roller garage doors the company has extended to manufacture all types of roller shutter and fire/smoke barrier, each with a unique set of properties to make them as fitter-friendly as possible. For requirements outside of the core product specifications, Aluroll's Research and Development team will work closely with architects to design a solution, complete with CAD drawings.

Market-Leading Showroom & Training Facility

Aluroll's modern factories and offices are located in Oswestry, Shropshire. The development also boasts the largest roller shutter showroom of its kind, with a working model of every product in the range. It is the perfect setting for product demonstrations and bespoke training for all ability levels from the experienced technical team. You can even celebrate afterwards with a drink at 'The Roll Inn'.



Made in Britain, Exported Globally

As well as manufacturing products for some of the UK's leading installers of physical protection products, Aluroll exports security shutters throughout the world.

Exceptional quality and service levels, combined with the specialised nature of our products and accreditations, result in many orders from overseas. We are experienced in managing export orders internationally, having handled projects across all continents, including Europe, Asia and the Middle East and Africa.

International specifiers understand some of the highest quality standards, innovative designs, and specialised certifications are found in products sourced from the UK.

All products are designed and manufactured in a single extensive UK facility, providing complete control over the process and lead times, from the initial concept through to the final installation. In-house technical specialists use extensive testing processes to develop practical solutions to excel within any brief.

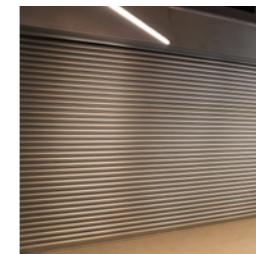
We have a history of working closely with internationally-renowned architects to develop unique products which are the first of their kind, however we are equally comfortable delivering more typical roller shutters for projects of all sizes. Previous jobs include a challenging brief for four large scale transparent roller shutters for a flagship store in Macau. The client? One of the world's largest multinational technology companies, famed for its exacting design standards.

A range of shipping and transportation partners ensure fast, smooth and cost-effective distribution across the globe. At Aluroll we understand that our role doesn't end when the product leaves the factory. Certified project managers and installers are on-hand to provide on or off-site training and guidance if required, and a full aftercare service is provided as standard.

Aluroll has satellite branches located in Abu Dhabi and Dubai to service the Middle East and North Africa regions with Civil Defence approved products.



Product Types



Security Shutters

Aluminium and steel roller shutters to suit all types of opening. From compact window shutters to heavy duty industrial applications, Aluroll offers a solution.

See page 8 for general specifications or page 10 for the high security Elite range, rated SR1 to SR5 according to LPS 1175 by the Loss Prevention Certification Board.

- ✔ Insulated & Vision Options
- ✔ Powder Coating
- ✔ LPCB Elite Upgrades

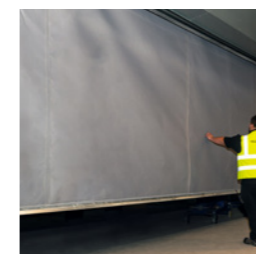


Fire Shutters

Flameroll FS roller shutters are rated for 1, 2 and 4 hours of fire resistance according to the latest in fire standards. Choose a single-skinned steel curtain or the double-skinned FS130i, which contains a unique insulating board for exceptional performance against radiant heat.

See page 13 for more information.

- ✔ 1 to 4 Hour Ratings
- ✔ Single or Double Skin
- ✔ Powder Coating



Fire & Smoke Curtains

Flameroll FC fire and smoke curtains are made from woven glass fabric with stainless steel wire reinforcement. They are tested to the latest fire standards for 1, 2 and 4 hours.

See page 13 for more information.

- ✔ 1 to 4 Hour Ratings
- ✔ Multiple Barrel Units Available

The Security Shutter Range...

Aluminium Products

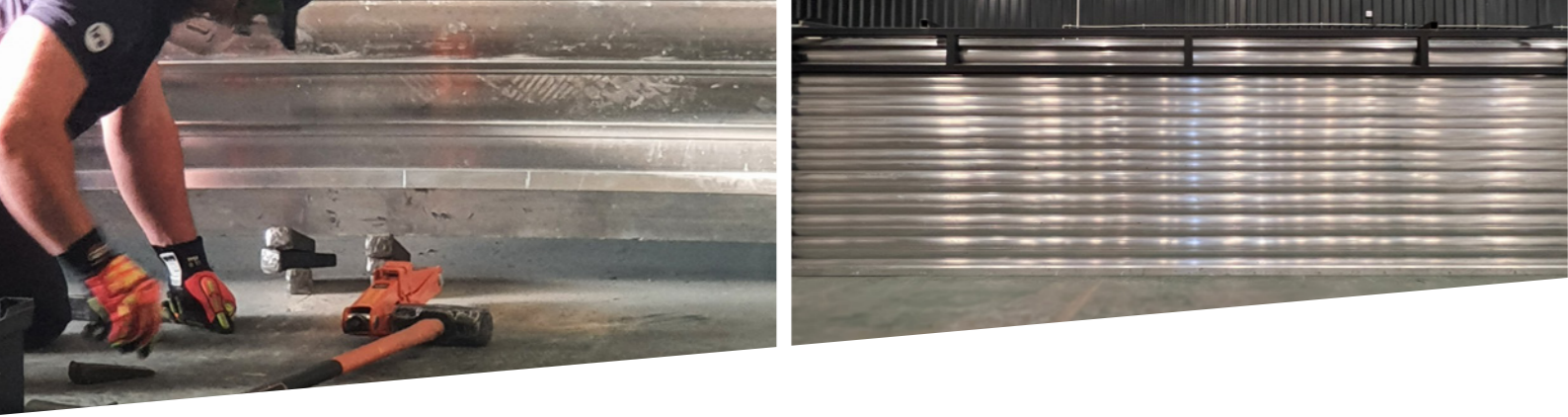
| | Profile Type | | | Application | | Measurements | | | | | Motors & Controls | Box Size & Plate Height (guide height up to, mm) | | | | | | LPCB Certified Elite Option Available? | | |
|------|----------------------------|----------|--------------|-------------|---------------------|----------------|----------------|----------------------------|--|--------------------------------|--|--|------|------|------|------|------|--|-------|-------|
| | Insulated (U-Value, W/m²K) | Extruded | Vision | Domestic | Commercial / Retail | Slat Face (mm) | Max Width (mm) | Max Area (m²) | Curtain Weight (kg/m²) | Guide Width(s) (mm) | | 150 | 165 | 180 | 205 | 250 | 300 | | 360 | |
| M411 | ✓ 3.7 | | | ✓ | ✓ | 42 | 3400 | 8 | 3 | 53 / 65 | ✓ Tubular motor ✓ Numerous control option variants such as rocker switch, key switch, remote and group or mobile phone activation ✓ Safety brake as appropriate to comply with legislation ✓ Manual options available (cord belt / spring & lock) | 1050 | 1435 | 1720 | 2295 | 3350 | | | | |
| T55 | ✓ 2.9 | | | ✓ | ✓ | 55 | 3500 | 10 | 3.5 | 66 | | | | 1235 | 1520 | 2195 | 3200 | | | |
| M511 | ✓ 2.2 | | | ✓ | ✓ | 55 | 4500 | 12 | 4 | 66 | | | | | | 1745 | 2900 | 4200 | | |
| E37 | | ✓ | | ✓ | ✓ | 37.5 | 4000 | 12 (Tubular) 9 (Manual) | 7.5 | 45 / 53 / 66 / 60HD | ✓ Tubular motor ✓ Numerous control option variants such as rocker switch, key switch, remote and group or mobile phone activation ✓ Safety brake as appropriate to comply with legislation ✓ Manual options available (cord belt / spring & lock) | 1050 | 1535 | 1820 | 2695 | 3550 | 4700 | | ✓ SR1 | |
| V37 | | | ✓ Punched | | ✓ | 37.5 | 4000 | 12 | 5 (Without glazing) 6.5 (With glazing) | | | | | | | | | | | |
| P37 | | | ✓ Perforated | | ✓ | 37.5 | 4000 | 12 | 6 | | | | | | | | | | | |
| T77 | ✓ 1.5 | | | ✓ | ✓ | 77 | 5500 | 16 | 5 | 70 / 90 (150 option available) | ✓ Tubular motor ✓ Numerous control option variants such as rocker switch, key switch, remote and group or mobile phone activation ✓ Safety brake as appropriate to comply with legislation ✓ Manual operation available for small sizes | | | | | 1750 | 2650 | 4640 | ✓ SR1 | |
| E77 | | ✓ | | | ✓ | 77 | 6500 | 25 | 8.5 | | | | | | | | 1650 | 2600 | 4640 | ✓ SR2 |
| V77 | | | ✓ Punched | | ✓ | 77 | 6500 | 25 | 7 (Without glazing) 8.5 (With glazing) | | | | | | | | 1650 | 2600 | 4640 | ✓ SR2 |
| P77 | | | ✓ Perforated | | ✓ | 77 | 6500 | 25 | 7.5 | | | | | | | | 1650 | 2600 | 4640 | |

✓ E130 SR3, SR4 & SR5 also available. See page 10 for the full LPCB range.

Steel Products

| | Profile Type | | | Application | | Measurements | | | | | Motors & Controls | Box Size & Plate Height (guide height up to, mm) | | | | | | |
|-----------------|----------------------------|----------|-----------------------------|---------------------|------------|----------------|------------------------------------|-------------------------------|---|--|--|--|----------------|-----------------------------------|-----------------------------------|-----------------|-----------------|-----------------|
| | Insulated (U-Value, W/m²K) | Extruded | Vision | Commercial / Retail | Industrial | Slat Face (mm) | Max Width (mm) | Max Area (m²) | Curtain Weight (kg/m²) | Guide Width(s) (mm) | | 305 | 355 | 400 | 450 | 500 | 550 | 600 |
| i95 | ✓ 1.1 | | | ✓ | ✓ | 95 | 7000 (Tubular) 10000 (Outboard) | 20 (Tubular) 35 (Outboard) | 12.8 | 85 | ✓ Tubular motor ✓ Outboard motor (single or three phase) ✓ Numerous control option variants such as rocker switch, key switch, remote and group or mobile phone activation ✓ Safety brake as appropriate to comply with legislation | | | 3500 | 4500 | 5500 | | |
| i100 | ✓ 1.5 | | | ✓ | ✓ | 81 | 6500 (Tubular) 12000 (Outboard) | 14 (Tubular) 72 (Outboard) | 21 | 85 | | | | 1500 | 2500 | 3250 | 4000 (Outboard) | 5000 (Outboard) |
| Tube & Link | | | ✓ | ✓ | ✓ | | 6000 (Tubular) 12000 (Outboard) | 12 (Tubular) 72 (Outboard) | 9 | 50 / 65 / 75 / 100 | | | 2695 (Tubular) | 4145 (Tubular) | 4500 (Tubular) 5200 (Outboard) | 6000 (Outboard) | | |
| Proflight Solid | | | ✓ Transparent Polycarbonate | ✓ | | 107 | 8500 | 40 | 10.5 | 100 | ✓ Tubular motor ✓ Outboard motor (single or three phase) ✓ Numerous control option variants such as rocker switch, key switch, remote and group or mobile phone activation ✓ Safety brake as appropriate to comply with legislation | 2750 (Tubular) | 4000 (Tubular) | 4500 (Tubular) 5000 (Outboard) | 6000 (Outboard) | | 7000 (Outboard) | |
| S76 | ✓ 1.5 | | | ✓ | ✓ | 76 | 7000 (Tubular) 12000 (Outboard) | 29 (Tubular) 72 (Outboard) | 9.8 / 12.5 / 16.7 (Depending on size/gauge) | 50 / 65 / 75 / 100 Windlock option available | ✓ Tubular motor ✓ Outboard motor (single or three phase) | | | | | | | |
| P76 | | ✓ | ✓ Perforated | ✓ | ✓ | 76 | 7000 (Tubular) 12000 (Outboard) | 29 (Tubular) 49 (Outboard) | 9.8 / 12.5 / 16.7 (Depending on size/gauge) | 50 / 65 / 75 / 100 | ✓ Numerous control option variants such as rocker switch, key switch, remote and group or mobile phone activation ✓ Safety brake as appropriate to comply with legislation | 2695 (Tubular) | 4000 (Tubular) | 5000 (Tubular) 6000 (Outboard) | | | 6000 (Outboard) | |
| V76 | | | ✓ Punched | ✓ | ✓ | 76 | 7000 (Tubular) 12000 (Outboard) | 29 (Tubular) 49 (Outboard) | 9.8 / 12.5 / 16.7 (Depending on size/gauge) | 50 / 65 / 75 / 100 | ✓ Manual spring & lock operation available for shutters up to 6.25m² | | | | | | | |

Steel LPCB products (SR1 to SR4) available on request.



The Home of Specialist Security...

The Standard for Security

The Loss Prevention Certification Board (LPCB) is the world's leading security body. Its approval provides assurance that a product has passed a strict set of independent tests and assessments set by a panel of experts in the field. As a result, LPCB certification is internationally recognised as a mark of quality and specified by governments, regulatory bodies and others requiring assurance of safety and security.

Aluroll's Elite security shutters have been successfully tested according to the LPCB's LPS 1175 standard. This specification provides a security rating based on resistance to attack using a number of different tools for various lengths of time.



Choose Elite Protection

All types of high security specification are covered by Aluroll's aluminium Elite range. SR1 through to SR5 products are available, all designed and manufactured to ISO 9001:2015.



E37 Elite (SR1)
Extruded profile offering strength and security in a compact design.
Suitable for: Small openings like windows, server rooms, doors and kiosks.



T77 Elite (SR1)
With a polyurethane core for insulating properties and quiet operation.
Suitable for: General purpose, small to medium openings.



E77 Elite (SR2) & V77 Elite (SR2)
Extruded for strength. Incorporate vision (V77 Elite) whilst maintaining high security.
Suitable for: Most commercial applications, including shop fronts, banks and museums.
Option to maintain lightflow and view of product displays.



E130 Elite (SR3 / SR4 / SR5)
Exceptional security levels in a market-leading innovative and lightweight aluminium design. Incorporates an anti-lift profile component, and anti-cut bars in the SR5.
Suitable for: Very high-risk openings, all opening sizes.

Please note all Elite products are rated subject to specific fixing requirements. Steel Elite products (SR1 to SR4) are also available on request.

LPCB Products

| | Security Rating (as tested by the LPCB, according to the LPS 1175 standard) | Profile Type | | | Measurements | | | | | Motors & Controls | Box Size & Plate Height (guide height up to, mm) | | | | | | |
|-----------|---|---|----------|-----------|---------------------------------|----------------|----------------------------|-------------------------------------|---------------------|--|--|------|------|------|------|------|------|
| | | Insulated (U-Value, W/m ² K) | Extruded | Vision | Slat Face (mm) | Max Width (mm) | Max Area (m ²) | Curtain Weight (kg/m ²) | Guide Width(s) (mm) | | 150 | 165 | 180 | 205 | 250 | 300 | 360 |
| E37 Elite | SR1 | | ✓ | | 37.5 | 3000 | 8.5 | 8 | 60HD | ✓ Tubular motor ✓ Numerous control option variants such as rocker switch, key switch, remote and group or mobile phone activation ✓ Safety brake as appropriate to comply with legislation | 1050 | 1535 | 1820 | 2695 | 3550 | 4000 | |
| T77 Elite | SR1 | ✓ 1.5 | | | 77 | 5000 | 16 | 5 | 150 | | | | | | 1750 | 2650 | 4640 |
| E77 Elite | SR2 | | ✓ | | 77 | 5000 | 25 | 8.5 | 150 | | | | | | 1650 | 2650 | 4640 |
| V77 Elite | SR2 | | | ✓ Punched | 77 | 5000 | 25 | 8.5 (with glazing) | 150 | | | | | | 1650 | 2650 | 4640 |
| E130 | SR3 & SR4 | | ✓ | | 105 slat + 25 anti-lift profile | 10000 | 90 | 30 | 120 | ✓ Tubular motor ✓ Outboard motor (single or three phase) ✓ Numerous control option variants such as rocker switch, key switch, remote and group or mobile phone activation ✓ Safety brake as appropriate to comply with legislation | Steel casing available on request | | | | | | |
| E130 | SR5 | | ✓ | | 105 slat + 25 anti-lift profile | 10000 | 90 | 32 | 120 | | | | | | | | |

Steel LPCB products (SR1 to SR4) available on request.



The Home of Fire Protection...

The Latest Standards

Fire shutters and fire curtains play a key role in building design. They are more than a necessity to meet fire legislation, offering many benefits in increasing the flexibility of architectural plans.

A robust fire protection system eliminates the need for alternative, more restrictive measures such as additional walls or smaller rooms. Fire shutters and fire curtains give architects the flexibility to design open spaces and build more storeys, all without compromising aesthetics. Metal components can be powder coated to blend into existing building features.

As one of the most established names in fire protection, specifiers can rest assured that Aluroll's FS fire shutters and FC fire curtains meet the latest standards, including BS EN 16034-1:2014. They are rated for 1 to 4 hours of protection, and both UKCA and CE approved.

Aluroll's in-house technical team will select from a choice of motor and control options to suit your fire strategy plan. Products can be connected to a fire alarm system via an interface panel so they automatically descend in the event of an alarm signal, and all fire curtains come with a fail-safe drive system for extra peace of mind.



Fire Shutters

Not dissimilar to a typical steel security shutter, these products have been tested to ensure they maintain their integrity in a fire. They operate automatically in the event of an alarm signal, providing reliable compartmentalisation and enhancing safety and security. All Aluroll fire shutters have been tested at Warringtonfire and certified by Element Materials Technology (Notified Body No. 2812).



FS60 / FS120 / FS240

Single-skinned steel profiles of varying gauges provide 1, 2 and 4 hour fire ratings. Maximum sizes of 56m² can be achieved, but they can be used for much smaller openings too, such as school canteens. Rated E240 for fire resistance and EW20 for radiant heat transference, and also certified to the EWCL5 scheme.

FS120i

A double-skinned steel profile allows for the incorporation of an advanced insulating core. This product is also rated E240 for fire resistance, with exceptional EW60 radiant heat properties. Reduced heat transfer through the shutter minimises the risk of a secondary fire starting on the other side.

Fire & Smoke Curtains

Whilst fire shutters are fitted within wall openings, fire curtains can be installed in open plan spaces. They are commonly installed in lobbies and lifts, protecting escape routes, providing fire compartmentalisation and reducing the spread of smoke.

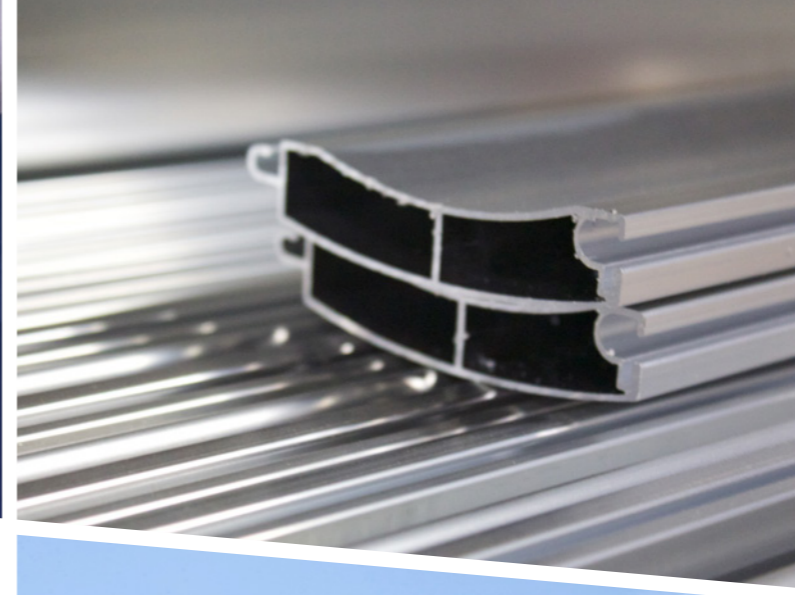


FC60 / FC120 / FC240

With fitter-friendly design details like self-setting limits and special guide channels, Aluroll's fire curtains have been developed with installation and maintenance in mind. By combining robust steel components and a technical woven fibreglass and steel fabric these products have achieved ratings of 1, 2 and 4 hours. Multiple barrel arrangements allow for coverage up to 90m².

SC120

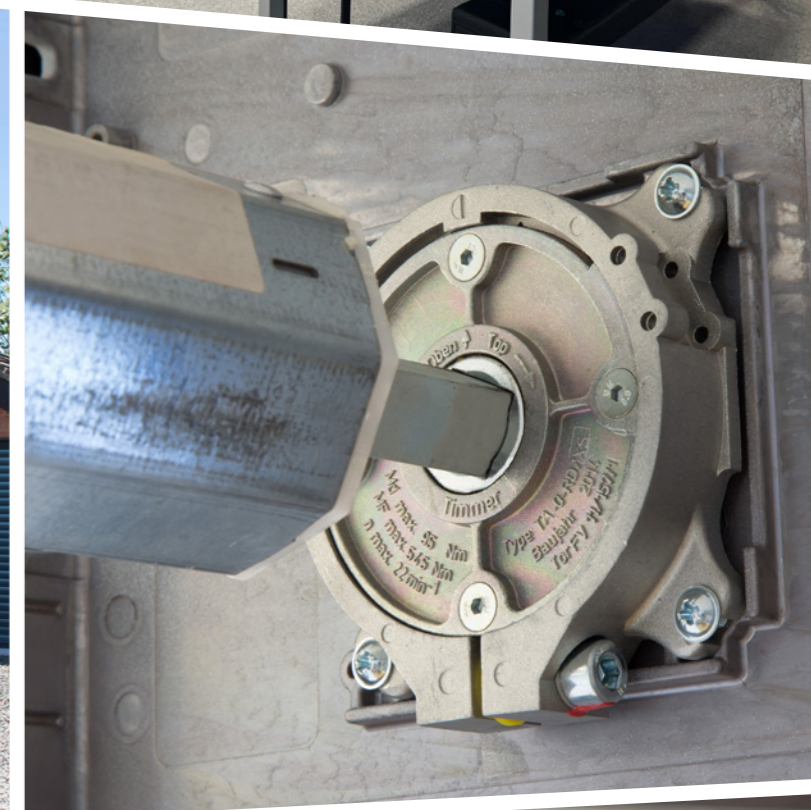
If a specification requires smoke control only, the SC120 provides a cost-effective solution. Rated for 2 hours.



Warranties & Facilities

Also available: Secureroll Roller Garage Doors

Aluroll is the largest independent manufacturer of roller garage doors in the UK. The Secureroll range includes the Classic (77mm profile) roller garage door, which is 'Secured by Design', and the space-saving Compact (55mm profile). A huge range of standard colours, full remote control operation, and wired/wireless safety systems are offered as standard. Request a Secureroll brochure for more information.



Warranties

Aluroll security shutters, fire shutters and fire curtains come complete with specific warranty periods. We guarantee that, during the relevant warranty period set out, all products will conform in all material respects with their description and specification, are free from material defects in design, material and workmanship, and of satisfactory quality. We recommend that all products are regularly serviced by your installer.

A copy of operating and maintenance instructions will be issued for all products. It is important that you keep a copy of this document as it contains details about your warranty, commissioning certificates and a service history form.

This warranty is subject to certain exclusions and limitations as set out in our full terms and conditions, which can be found at www.aluroll.co.uk/terms-and-conditions.

Showroom & Training Facility

Aluroll's 1500 square foot showroom is the largest and most impressive of its kind in the UK, containing fully functioning installations of all available products complete with the latest control solutions from our partners Somfy, GFA, Ellard & JCM.

The Showroom is open from 8am to 5pm Monday to Friday and doubles as our Product Training School.

We encourage all Aluroll approved installers to undertake regular product training and Continual Professional Development (CPD) is available for Customers, Architects and Specifiers.





 **ALUROLL**

Artillery Business Park, Garrison Avenue, Park Hall, Oswestry, Shropshire, SY11 4AD

Tel: 0800 9778975 | www.aluroll.co.uk